

# Frost Productions

## Column Clamp Installation Instructions

Photo #1

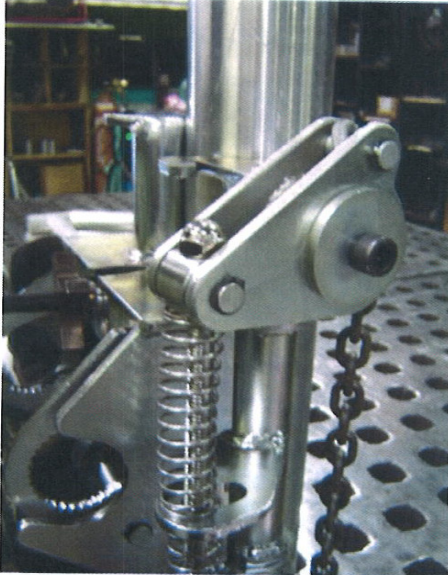


Photo #2



Position Quick clamp in desired location on column as show in Photo #1  
Back clamping screw off to stop nut as shown in Photo #2

Photo #3



Wrap upper chain around post and secure it in the chain hook taking all the chain slack – Photo #3  
Repeat on bottom chain

# Frost Productions

## Column Clamp Installation Instructions

Photo #4

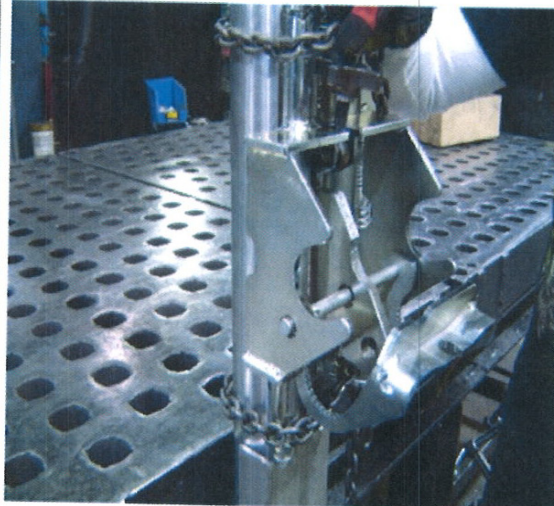


While holding column clamp against column tighten the clamping screw until the chains are tight. (This will not require the clamping screw to be extremely tight just snug) – **Photo 4**  
If the screw runs out of travel before the cams tighten the chains repeat above steps Photo's 1-3

Photo #5



Photo #6



Open the light bar clamping jaw of the column clamp – Photo #5 & 6



# Frost Productions

## Column Clamp Installation Instructions

Photo #7



Place a light bar or pipe in the clamp ( Either 2" tubing or 1.5" sch40 pipe) – Photo #7

Photo #8

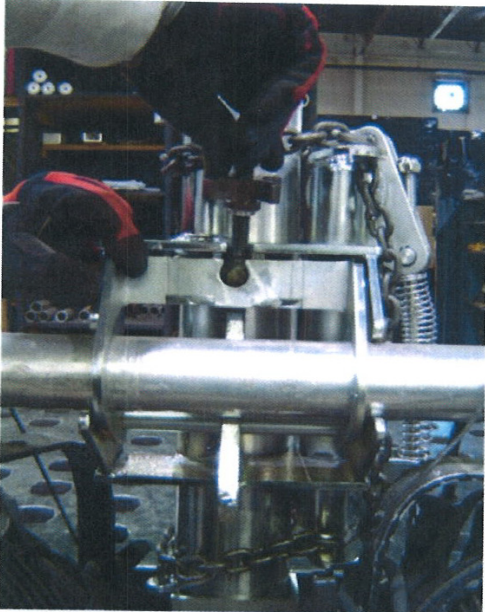
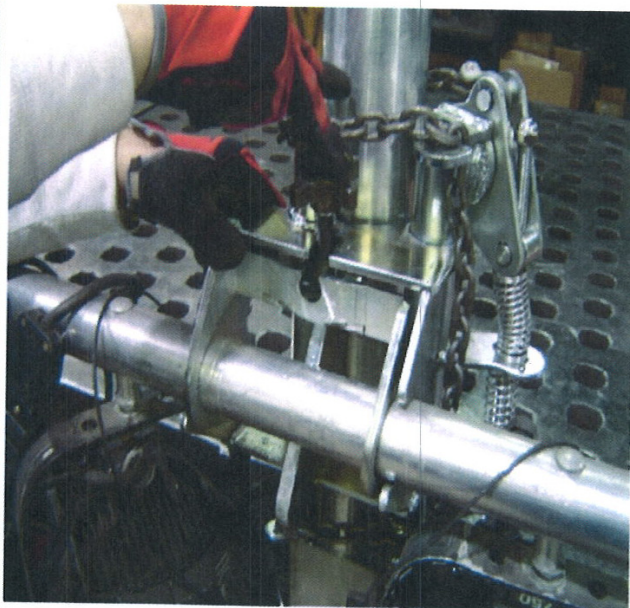


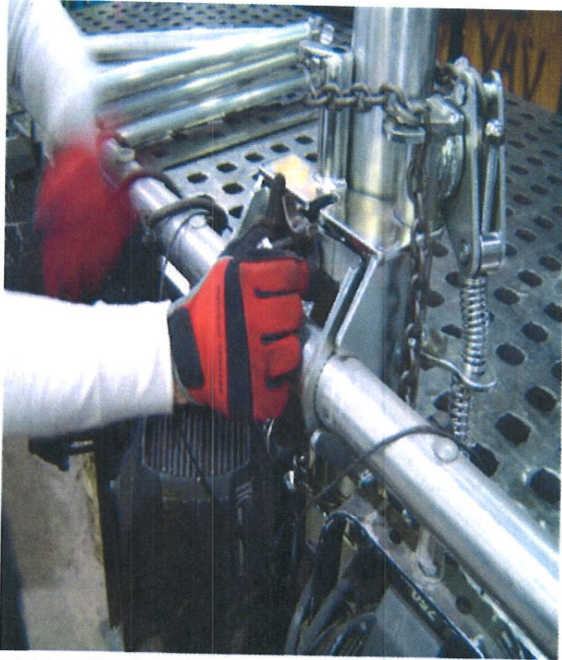
Photo #9



8) Close the jaw of the clamp and flip the toggle bolt down to hold it in position as shown in Photo #8 & 9

## Column Clamp Installation Instructions

Photo #10



Tighten the hand nut on the toggle bolt to secure the lamp bar as shown in Photo #10.

We have provided a 3/4" utility hole in the column clamp as well. This feature of the column clamp carries no specific rating as this will be determined by the diameter of the pole, pole construction, elevation, and rigging type.